

Receiving RichGen

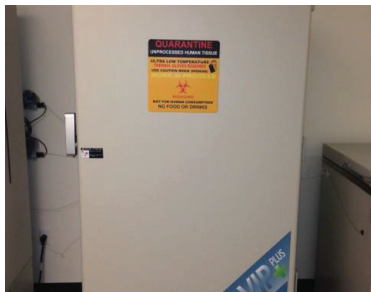
- RichGen** is human tissue allograft that is received in a box on dry ice.
**Provided aseptic but NOT sterile.*



- Before opening the box, check the label. You must use graft before the expiry date or transfer to a cryo freezer. Use gloves with dry ice.

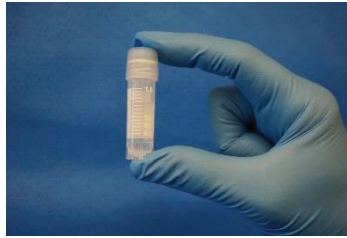


- Move to an ultracold cryo freezer and store at $-80^{\circ}\text{C} \pm 15^{\circ}\text{C}$ or move to office/OR.



Preparation & Dilution

The necessary materials for the procedure are:



- RichGen** graft
- A 3cc Syringe
- 18 Gauge Needle
- 22 or 23 Gauge Needle
- The Dilutant of Choice

Acceptable Dilutants:

- Normal Saline
- 1% preservative free plain lidocaine or Marcaine
- Platelet rich plasma

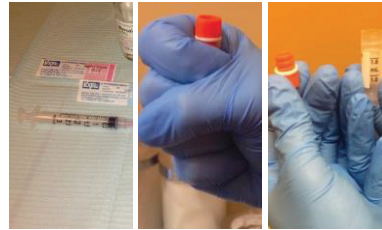
Prohibited Dilutants:



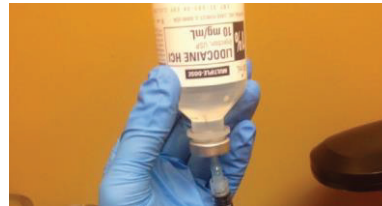
- Glycerol (eg. Grafton DBM)
- Glucose Solutions (eg. D5NS)
- Epinephrine
- Lidocaine/Marcaine with preservatives
- Lidocaine/Marcaine in joints
- Chemical debridement (eg. Santyl)
- In IV or with intra-arterial injections

Preparation & Mixing

- Remove the package from freezer or dry ice container. Cut the package.
**Outside of vial is not sterile*



- Defrost vial by holding still in hand for 3-5 minutes.
**Do not shake vial*



- Fill syringe with dilutant. (typically, 1:1 ratio)
- Draw **Rich Gen** into syringe with 18g needle.
- Use a 22 or 23g needle for implantation but nothing smaller than a 23g



Preparing the Patient

When treating tendons, joints, fascia or facets it is recommended to use one of the following to initiate an inflammatory response:

- Extra Corporeal Shockwave Therapy
- Radial Pulse Therapy
- EPA_t LASER – TaG, Diode
- Coblation



Alternatively, in the office you may use:

- Needling
- Trephining
- Movement



Recommended Joint Dosing



Shoulder
1ml **RichGen**
1:2 up to 1:4 dilution



Elbow
1ml **RichGen**
1:1 dilution



Wrist, Fingers & Facets
(per joint)
0.25ml, **RichGen**
1:1 dilution



Hip
2ml **RichGen**
1:2 up to 1:3 dilution



Knee
Stage 3: 0.5ml **RichGen**
Stage 4: 1ml **RichGen**
1:2 dilution



Ankle
1ml, **RichGen**
1:1 dilution



Subtalar & Midfoot
Joints
0.5ml **RichGen**
1:1 dilution



MPJ's & Toes
(per joint)
0.25ml, **RichGen**
1:1 dilution

Post Implantation Protocol

Stimulation or Inflammation of tissue is desired to increase success:

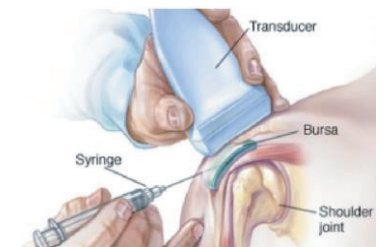
- No Anti inflammatories
- No Aspirin
- Minimize immobilization
- No icing
- Protected Active Rehabilitation is recommended

Tendon Repair Directions

Implant under Ultrasound guidance

Direct into & around Paratenon for:

- Tendinosis
- Tendonopathy
- Tenosynovitis
- Small Cuff Tears
- Bursitis





RICHGEN™
PRODUCTS

Application Guide